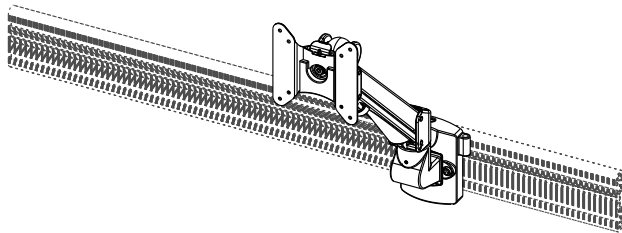


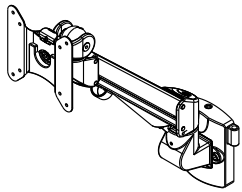
Assembly Guide

To mount your flat panel monitor or any parts at an ergonomically correct position, start at step 1 and continue as directed.



Part Check-List

①



X1

②



(5mm)

X1

③



(4mm)

X1

④



(2mm)

X1

⑤

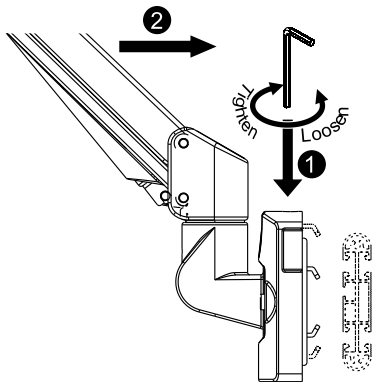


X4

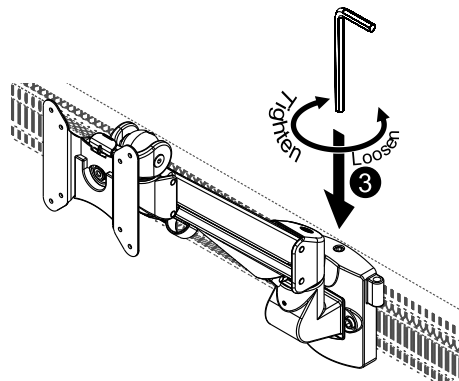
Step 1

① Loosen the bolt and adjust the hook of the bottom plate to fit your partition.

② Fix the bottom plate to the partition.

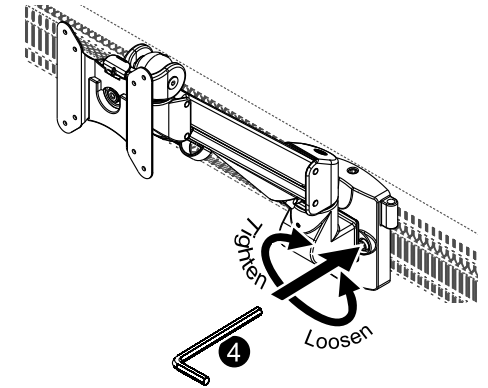


③ Tighten the bolt using 5mm Allen key.

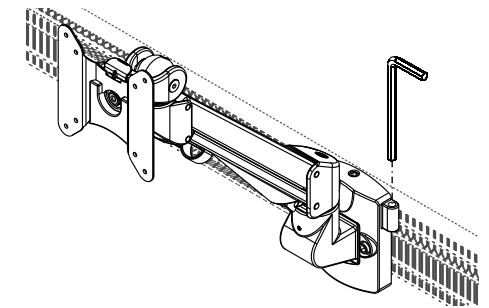


Assembly Guide

④ If the arm is not securely attached to the partition, please adjust the screws on both the left and right side.

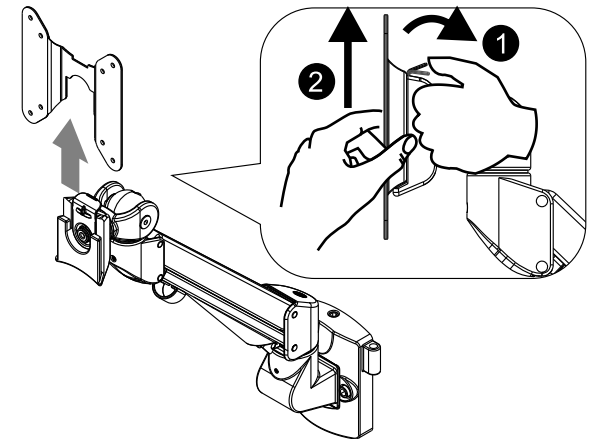


● The Allen key can be conveniently stored in the holder (as shown) for future use after adjustments have been made.



Step 2

Remove the VESA plate by pinching the grey plastic tab to release the lock, then pull the plate upward to separate from the arm.

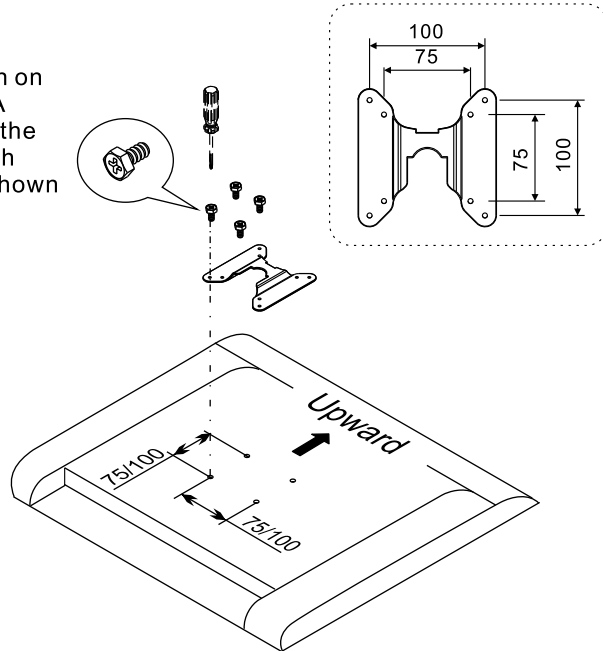


CMS2083 / CMS2084

Assembly Guide

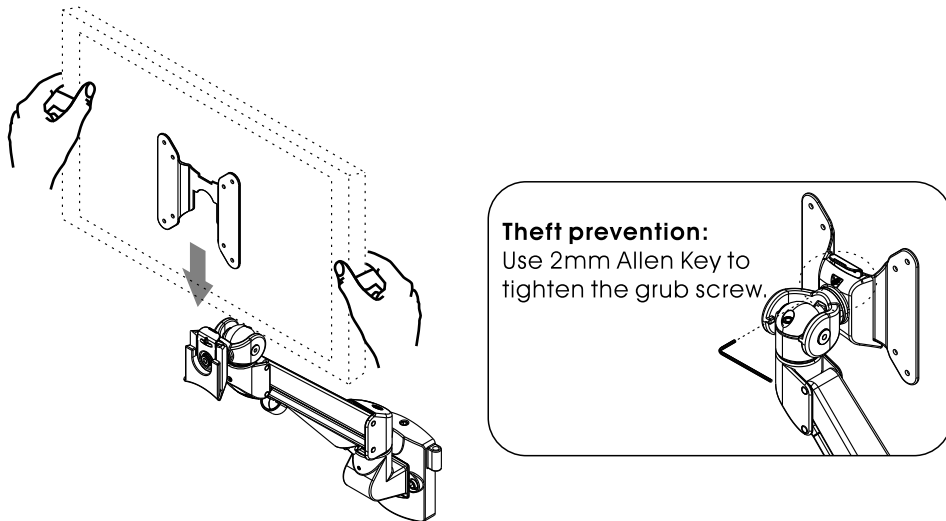
Step 3

Place LCD monitor face down on a flat surface. Align the VESA plate holes with the holes on the back of the monitor and attach using the screws provided (shown below).



Step 4

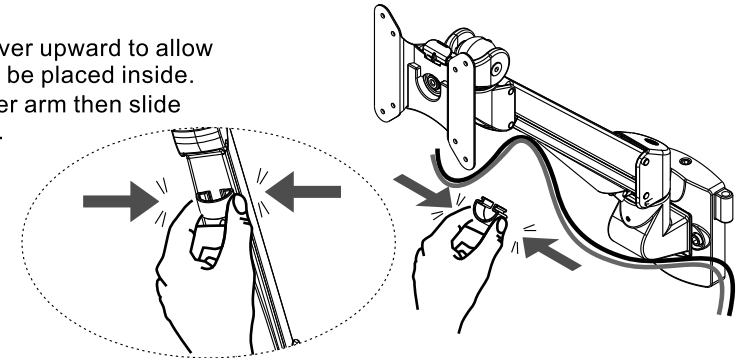
Slide the monitor (with VESA plate) onto the arm making sure it "clicks" securely into place.



Assembly Guide

Step 5

Slide the cable cover upward to allow room for cables to be placed inside. Route cables under arm then slide the cover back on.



Tension Adjustment

Caution:

Support arm while adjusting tension.

Adjustment:

Use the Allen key provided to adjust the tension to correspond to the weight of the monitor. Twist the Allen key in a clockwise direction for heavier monitors; counterclockwise for lighter monitors.

Adjustment:

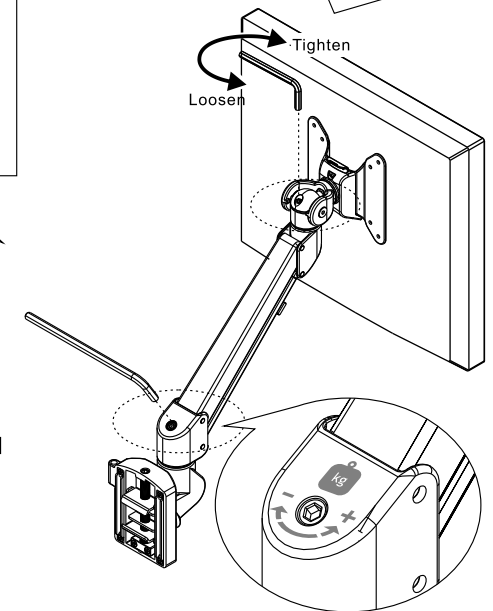
Use the Allen key provided to adjust the tension to correspond to the weight of the monitor. Twist the Allen key in a clockwise direction for lighter monitors; counterclockwise for heavier monitors.

Weight Capacity:

6.6 ~ 17.6 lbs (3~8kg)

- Products loading capacities are based on monitors' center of gravity less than 3cm from the end of the VESA interface. Loading capacity could be reduced if monitor size of greater than 26 inches or depth of greater than 5.5cm.

● All products specifications in catalogues are subject to change without notice.



Please contact your supplier for more information.